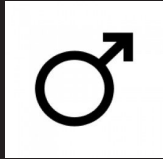


Chapter ONE **ARIES**

	MARS	♂	SELF HONORING	00° DEGREES	1ST HOUSE	PLANET: MARS
	ARIES	♈	ASCENDANT	DUE EAST	MALE	DEITY: SHIVA
	FIRE	YANG	CARDINAL	SUNRISE	GEMS: GARNETS, RUBIES	



NATURAL LAW operates in Aries (in the Northern Hemisphere) through the sprouting of life connected to the Vernal Equinox and Spring.

In the time of Aries we see the seed bursting through the ground. If we see this in slow motion, the little seed has a red energy all around it, giving it the force to push through the horizon of the earth.

Aries begins the process of individuation. It is the first house of the Horoscope. Aries is always about beginnings.

ARIES MANTRAS

“I AM SELF-HONORING”

“I align myself with all that is.”

“I am self-assertive, instinctually finding the right way forward.”

“I make time to do my own thing, while allowing for the needs of the others in my life.”

RIGHT ACTION FOR ARIES

DESIRES It is necessary to reflect upon what you desires. Reflect on the highest and best outcome for your life. Don't be self-indulgent or selfish.

ANGER Harness your projections and instead open up the pathway to personal freedom.

ACTIONS May need to be monitored; look before you leap, consider the outcome.

INITIATIVE May need to be directed; decide your priorities and act on those impulses which fulfill your soul's desires.

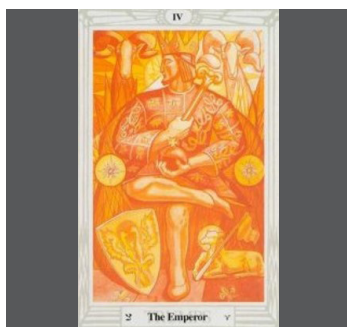
CONSIDERATION for others is necessary, take time for yourself so that you can be fully present with others. Aries is the polarity of Libra and the self/other paradigm needs full attention.

PIONEERING In Aries we must trust our instincts and develop inner knowing.

IDENTITY The “self” is related to the archetype of Aries, so selfishness, self-centeredness, and a healthy sense of self are all some of the issues of the first house, Mars and the Aries archetype.

SEXUALITY Mars and Pluto will delineate the soul's capacity and need to align with natural law and healthy sexual self-expression.

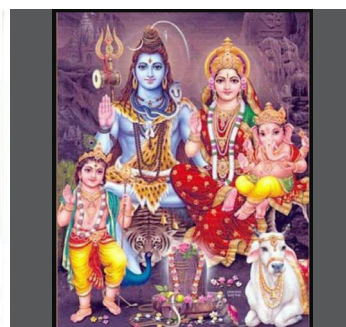
TAROT



YANTRA



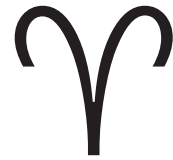
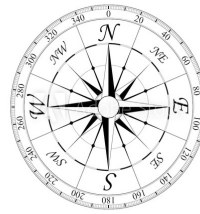
DEITY



GEMS

Aries - Chapter ONE

Directions



Mars is the Planetary Archetype which leads us to explore our desires.

SIGN	°	ALIGNS SOULS BY	SHADOW
♈	00° N	Self-reflection, healing, nurturing, adapting to changing circumstances	Clinging, hovering, hysteria
♉	15° NNE	Naming, learning to focus and process information positively	Gossip, two-faced, shallow
♊	45° NE	Self-worth, using talents to earn a living	Greed, stuck, vanity
♋	75° ENE	Self-honoring, vitality and love of life, freedom to express oneself	Anger, competitive, acerbic
♌	90° E	Self-assertion, pioneering, exercising	Warlike, prickly, aggressive
♍	105° ESE	Contemplation, talents, higher love, inspirational	Spaced out, delusional, escapist
♎	135° SE	Friendships, shared goals	Aloofness, ultimatums, elitist
♏	165° SSE	Family, self-confidence	Superiority, guilt, inner judgment
♐	180° S	Success in world, leadership, dignity	Class war, one-upmanship, domination
♑	195° SSW	Learning natural law, aligning with Mother Nature	Deceit, existential angst, limiting beliefs
♒	225° SW	Marriage, intimacy and shared resources	Power trip, betrayal, paranoia
♓	255° WSW	Relationships with others	Ungrounded, compulsion to be needed
♈	270° W	Aligning with the social order in a way that fits your soul's purpose	Projection, one-way street in relationships
♉	285° WNW	Self-improvement, discrimination, exercise for living in the human form	Negative mind, making excuses, doubt
♊	315° NW	Self-expression, children, celebrating life	Narcissism, risk-taking, puer/puella, pride
♋	345° NNW	Emotional self-sufficiency, developing a healthy self-image	Lunacy, ferocity, madness